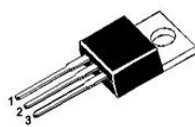
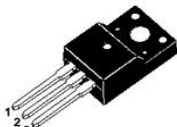


**Three-terminal positive voltage regulator**

TO-220AB



TO-220F



TO-252

1.In 2.G nd 3.Out

FEATURES

- Maximum output current IOM: 1A
- Output voltage VO: 5 V

RoHS**ABSOLUTE MAXIMUM RATINGS**

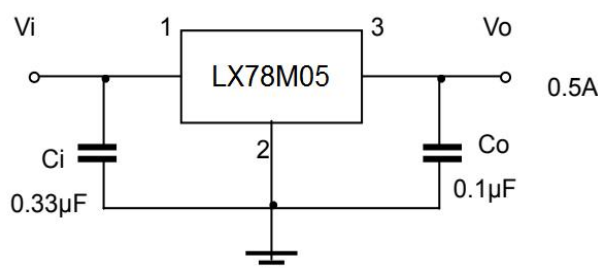
Operating temperature range applies unless otherwise

Parameter	Symbol	Value	Unit
Input Voltage	V	35	V
Operating Junction Temperature Range	TOPR	-20~+125	°C
Storage Temperature Range	T	-65~+150	°C

ELECTRICAL CHARACTERISTICS AT SPECIFIED VIRTUAL JUNCTION

(Vi=10V, Io=350mA, Ci=0.33μF, Co=0.1μF, unless otherwise specified)

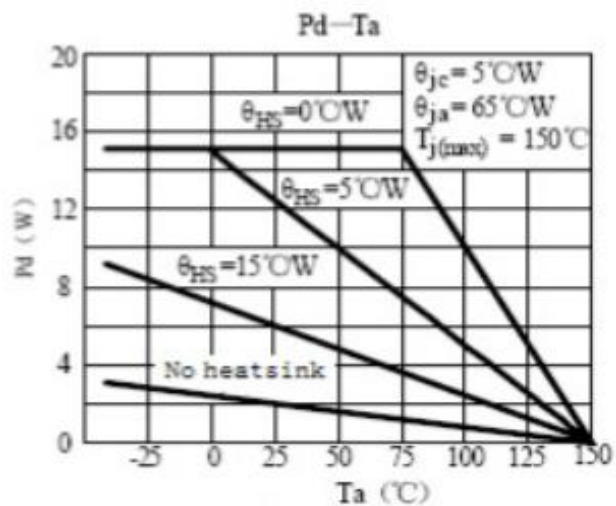
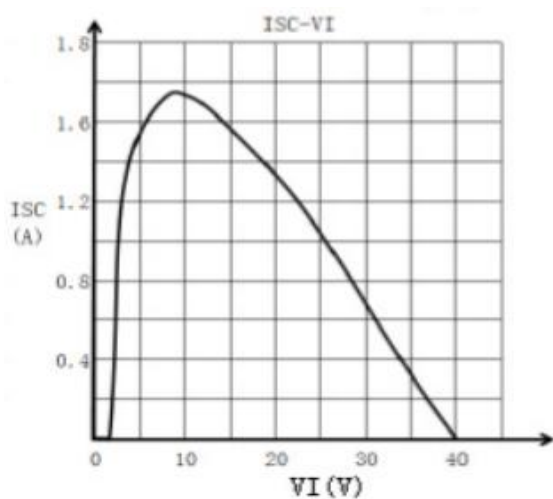
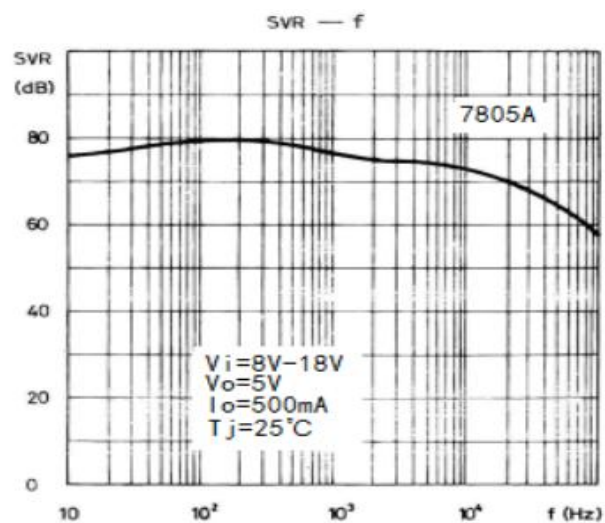
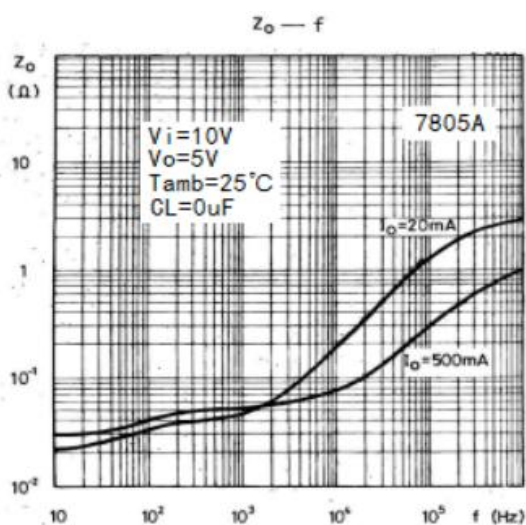
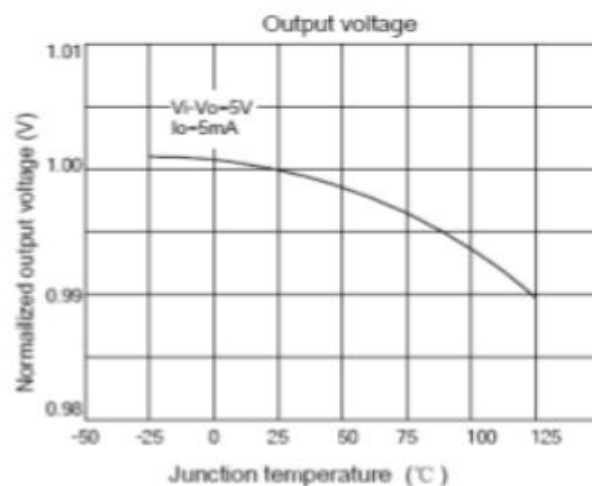
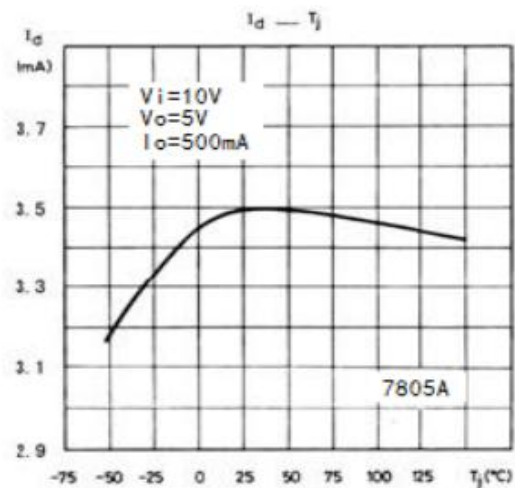
Parameter	Symbol	Test conditions	Min.	Typ.	Max.	Unit
Output Voltage	Vo	25°C	4.8	5	5.2	V
		8V≤Vi≤20V, Io=5mA-1.0A Po≤ 15W 0~125°C	4.75	5	5.25	V
Load Regulation	ΔVo	Io=5mA-1.0A 25°C		9	100	mV
		Io=250mA-750mA 25°C		4	50	mV
Line Regulation	ΔVo	7.5V≤Vi≤20V, Io=250mA 25°C		4	100	mV
		8V≤Vi≤12V, Io=250mA 25°C		2	50	mV
Quiescent Current	Iq	25°C		4.2	8	mA
Quiescent Current Change	ΔIq	8V≤Vi≤25V, Io=500mA 0~125°C		0.3	0.8	mA
		5mA≤Io≤1.0A 0~125°C		0.03	0.5	mA
Output Noise Voltage	VN	10Hz≤f≤100KHz 25°C		42	-	μV
Ripple Rejection	RR	8V≤Vi≤18V, f=120Hz 0~125°C	62	73		dB
Dropout Voltage	VD	Io=1.0A 25°C		2	-	V
Short Circuit Current	ISC	Vi=35V 25°C		200		mA

TYPICAL APPLICATION

Note: Bypass capacitors are recommended for optimum stability and transient response and should be located as close as possible to



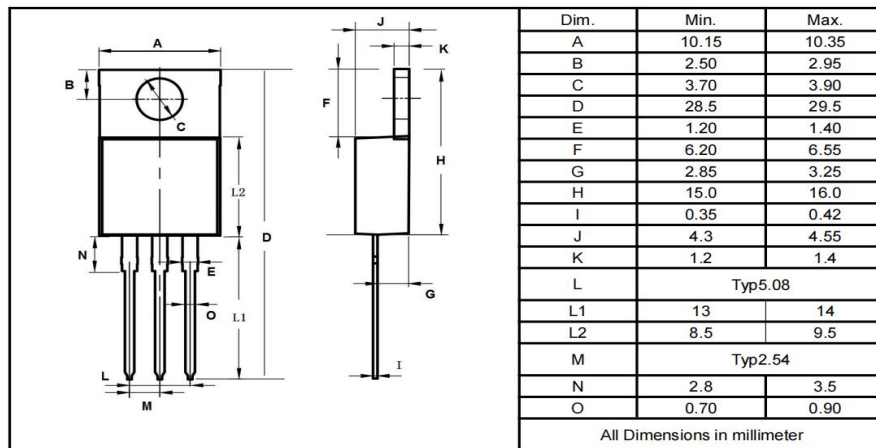
RATINGS AND CHARACTERISTIC CURVES



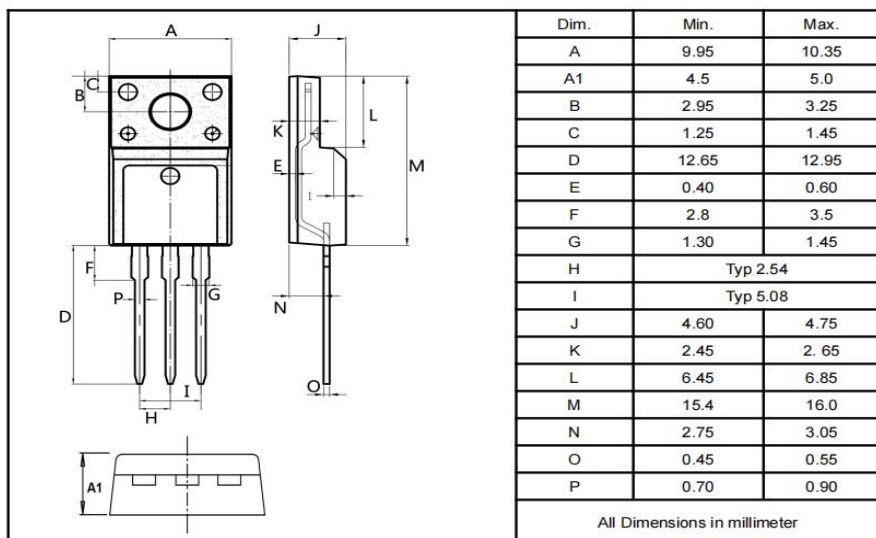


Package Outline Dimensions millimeters

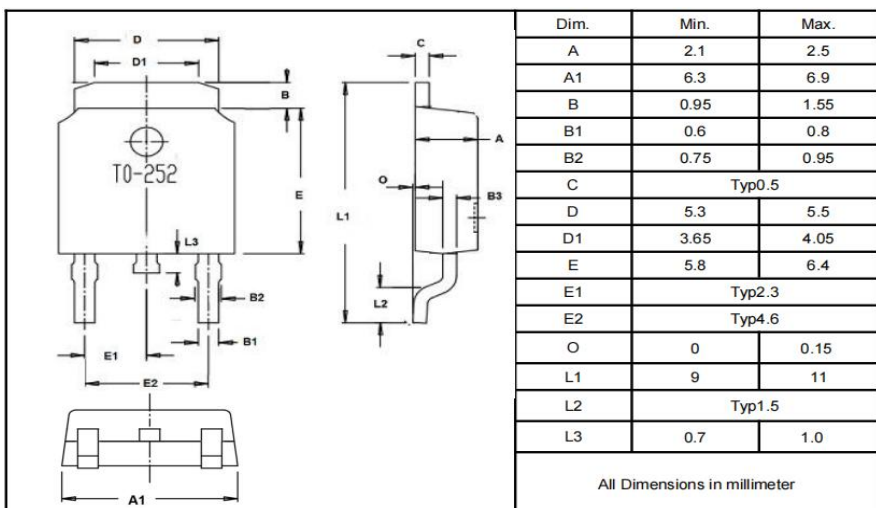
TO-220AB

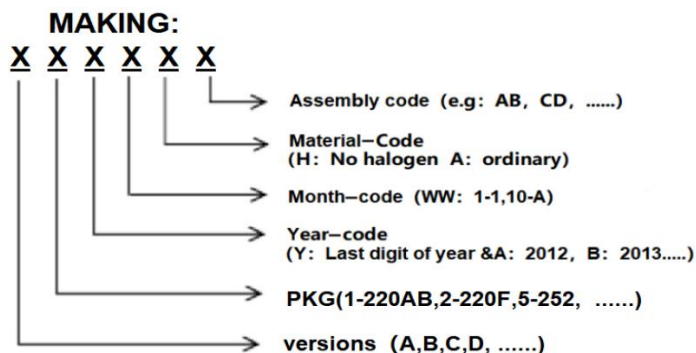
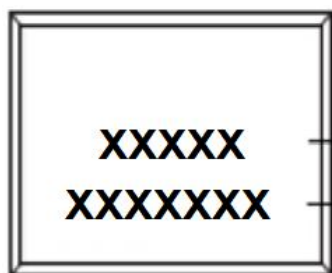


TO-220F



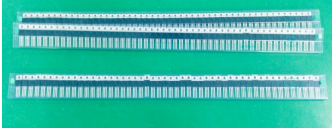
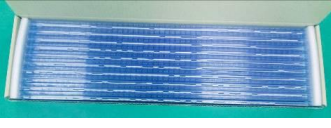

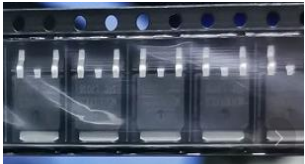


TO-252



**Marking on the body****Ordering information**

Part Number	Package	Unit Weight	Base Quantity	Delivery mode
78D05	TO-220AB	0.07oz(1.96g)	50 pcs / tube	1000pcs/box 5000pcs/carton
78D05	TO-220F	0.06oz(1.74g)	50 pcs / tube	1000pcs/box 5000pcs/carton
78D05	TO-252	0.011oz(0.32g)	2500 pcs / reel	5000pcs/box 25000pcs/carton

packing instruction

PKG	最小包装	内盒	外箱
TO-220AB TO-220F			
	50pcs/管	1000pcs/盒	5000pcs/箱
TO-252			
	2500pcs/盘	5000pcs/盒	25000pcs/箱

Notice

IMPORTANT NOTICE, PLEASE READ CAREFULLY

The information in this data sheet is intended to describe the operation and characteristics of our products. LingXun has the right to make any modification, enhancement, improvement, correction or other changes to any content in this data sheet, including but not limited to specification parameters, circuit design and application information, without prior notice.

Any person who purchases or uses LingXun products for design shall: 1. Select products suitable for circuit application and design; 2. Design, verify and test the rationality of circuit design; 3. Procedures to ensure that the design complies with relevant laws and regulations and the requirements of such laws and regulations. LingXun makes no warranty or representation as to the accuracy or completeness of the information contained in this data sheet and assumes no responsibility for the application or use of any of the products described in this data sheet.

Without the written consent of LingXun, this product shall not be used in occasions requiring high quality or high reliability, including but not limited to the following occasions: medical equipment, automotive electronics, military facilities and aerospace. LingXun shall not be responsible for casualties or property losses caused by abnormal use or application of this product.